

C-QUADRAT Active YOU T

Fund Description

Active Approach - The C-QUADRAT Active YOU follows an active asset allocation approach which takes quantitative and qualitative decision-making factors into account. On this basis, a diversified portfolio consisting of different market segments is compiled. The investment fund does not follow any benchmark and tries to reduce long-term losses through active risk management.

Flexible Asset Allocation - Depending on market developments, the C-QUADRAT Active YOU may invest up to 50% of its assets in equity funds. In case of negative equity markets, a complete disinvestment from equity investments is possible. The exposure to bond and/or money market funds may fluctuate between 0%-100%.

State as of: 29/10/2021

Signatory of:



Performance since 31/03/2009: +2.09 % p.a.

as of 29/10/2021



YTD	5.63 %	1 year	10.08 %	5 years	1.98 %	5 years p.a.	0.39 %
------------	---------------	---------------	----------------	----------------	---------------	---------------------	---------------

Past performance figures and simulated performance do not constitute any reliable indicator of future performance. Every capital investment bears a risk. Prices may rise as well as fall. Issue and redemption fees have not been taken into account when calculating performance. Performance data have been calculated using the OeKB method. In case of an investment amount of 1,000 EUR, the investor will be required to pay a subscription fee of max. 52.50,- EUR. This will accordingly diminish the performance of his investment. Any custody charges will further reduce the investor's return.

Calculation provided by Cyberfinancials Datenkommunikation GmbH.

Monthly performance

	JAN	FEB	MAR	APR	MAY	JUN	JUL	AUG	SEP	OCT	NOV	DEC	Year
2011	-1.27%	0.32%	-1.61%	0.54%	-0.22%	-2.39%	0.56%	-2.87%	-0.23%	-0.46%	-2.06%	1.75%	-7.74%
2012	2.87%	1.45%	1.21%	-0.22%	0.44%	-0.54%	2.30%	0.00%	-0.21%	-0.75%	0.11%	0.43%	7.24%
2013	0.32%	-0.11%	2.14%	0.31%	0.84%	-3.52%	1.50%	-1.38%	2.04%	1.79%	0.72%	0.51%	5.15%
2014	-0.51%	1.95%	-0.60%	0.00%	1.11%	1.20%	1.09%	0.98%	-0.48%	-1.07%	2.66%	0.48%	6.94%
2015	1.53%	2.27%	1.57%	-0.36%	0.18%	-2.47%	0.28%	-3.55%	-0.77%	2.34%	0.95%	-3.02%	-1.27%
2016	-3.60%	0.71%	0.20%	1.00%	-1.39%	2.11%	2.26%	0.87%	0.00%	1.15%	-2.45%	2.80%	3.51%
2017	-0.38%	0.73%	-0.75%	-0.57%	-0.38%	-1.34%	0.29%	-0.29%	1.07%	1.73%	-0.47%	0.00%	-0.41%
2018	1.71%	-1.75%	-2.57%	0.49%	0.58%	-0.58%	0.78%	1.35%	0.00%	-4.67%	1.00%	-2.57%	-6.27%
2019	3.35%	2.06%	1.25%	2.76%	-3.70%	1.15%	2.47%	-0.74%	0.75%	-0.28%	0.84%	0.65%	10.87%
2020	0.82%	-2.37%	-12.78%	2.03%	0.73%	-0.73%	2.31%	1.43%	-1.41%	-0.41%	2.67%	1.50%	-6.99%
2021	1.38%	1.46%	-1.92%	1.96%	-0.58%	2.41%	0.38%	1.13%	-2.14%	1.52%			5.63%

KEY FIGURES (since 31/03/2009)

NAV as of 29/10/2021	T:	10.70 EUR
	A:	9.61 EUR
	VTIA:	11.16 EUR
Fund size		17.72 m EUR
Volatility		6.31 %
12m high		10.84 EUR
12m low		9.71 EUR
Mod. sharpe ratio		0.35
Performance 2020		-6.99 %
Performance 2019		10.87 %
Performance 2018		-6.27 %

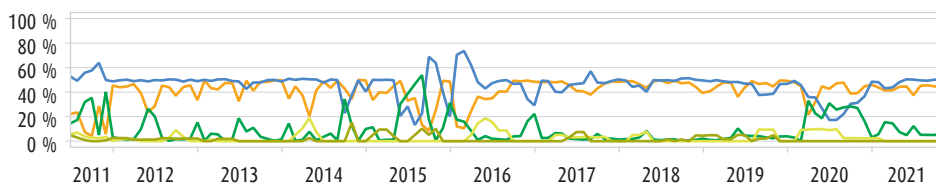
FUND DATA

Investment company	Raiffeisen Kapitalanlage-Gesellschaft m.b.H.
Manager	Impact Asset Management GmbH
Custodian of the fund	Raiffeisen Bank International AG
Distribution policy	reinvesting
ISIN code *	AT0000720065
WKN	72006
Fund currency	EUR
Inception date	02/02/2001
Management takeover	31/08/2009
Subscription fee	up to 5.25 %
Management fee	up to 1.75 % p.a. (+ 15 % performance fee - high-water-mark)
Dealing	daily (Cut-off: 13:30 CET)
Legal form	Austrian Investment Fund § 2 InvFG 2011, OGAW / UCITS compliant
Financial year	01/12 - 30/11
Registered for sale in	AT/CZ/HU/RO/SK

*ISIN-Codes further tranches see page 2

Historical Asset Allocation

(30/06/2011 - 29/10/2021)

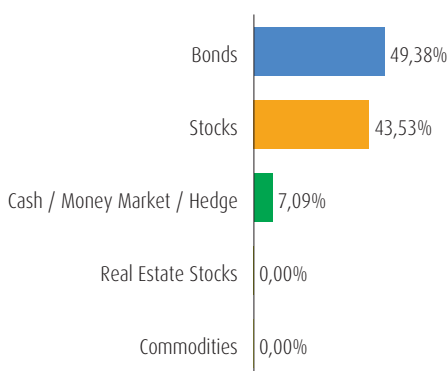


■ Aktien ■ Anleihen ■ Cash / Geldmarkt / Absicherung ■ Rohstoffe ■ Immobilienaktien

Diagram showing the historic asset class allocation Calculation provided by Cyberfinancials Datenkommunikation GmbH.

Asset Allocation

as of 29/10/2021



Largest Positions

as of 29/10/2021

C-QUADRAT GR ST ESG-R A EUR	8.65 %
C-QUADRAT GreenStars Global Equiti.	8.12 %
Schroder - EURO Corporate Bond	7.46 %
UBS (Lux) Bond SICAV - Convert Glo.	7.45 %
Amundi Funds - Emerging Market	7.41 %
Guardian Equity Fund	6.86 %
QUANTIC fair global ESG I (T)	6.51 %
Aviva Investors - Global Equit	5.09 %
Absalon - Global High Yield	5.09 %
AIM LUX - AIM Europe Multicaps	5.08 %

The portfolio data is based on the most recently available information sources and may therefore deviate from the portfolio data indicated in the fund's accounting (legal/factual inventory).

Opportunities / Advantages

- Above-average capital growth in the medium to long term through investment in the global equity and bond markets
- Active management in the selection of target funds aims at a high participation in the most promising markets
- Risk diversification through the bundling of international capital market expertise in one fund

Risks

- Periods of weakness in individual investment markets - especially equity markets - may have a negative impact on the fund's performance
- Currency fluctuations can influence the performance of the fund
- Growth funds and certain sector funds are characterised by above-average volatility in the share price
- Credit rating and default risk of individual issuers, countries and sectors

This marketing document is provided for non-binding information purposes only and does not represent any offering or invitation to purchase or sell units in an investment fund, and nor should it be deemed an invitation to submit an offer for conclusion of any contract on investment services or collateral performance. This document cannot replace the advice of your personal investment advisor.

The basis for the purchase of investment units is the presently valid prospectus, the current versions of the key investor document ("KID" or "KIID") as well as the annual report and, if older than eight months, the semi-annual report. Potential investors may obtain the current German-language versions free-of-charge from Raiffeisen Kapitalanlage-Gesellschaft m.b.H., Mooslackengasse 12, A-1190 Vienna. They are also available at www.rcm.at. PAYING AGENCY:

CZ: Raiffeisenbank, a. s., Hvězdova 1716/2b, 140 78 Praha 4 / HO: Raiffeisen Bank Rt., Akadémia u. 6., H-1054 Budapest / RO: Raiffeisen Bank S.A., 246D Calea Floreasca, 014476 Bukarest 1 / SK: Slovenskej Tatra banka a.s. Bratislava 55 Hodžovo nám. 3.

Units of the fully reinvesting tranche may only be purchased and held by individuals who either are not subject to the Austrian Income Tax (Einkommenssteuer, ESt) or Austrian Corporate Income Tax (Körperschaftsteuer, KSt) or who fulfill the requirements for exemption in accordance with § 94 ESt or for exemption from the Austrian Investment Income Tax (Kapitalertragssteuer, KESt). An offer or the sale of the full income-retaining tranche cited to other individuals is therefore not permitted.

Past performance figures and simulated performance do not constitute any reliable indicator of future performance. Fund-based investments are subject to general economic risks as well as fluctuations in value which may result in losses - and even the total loss of the capital invested. Express reference is made to the detailed risk notices provided in the prospectus.

All performance figures indicated are gross performance figures. These include any costs arising at the fund level and assume the reinvestment of any distributions.

CONTACT INFORMATION

Info-hotline: +43 1 51566 0

e-mail: sales@impact-am.eu

Internet: www.impact-am.eu

FURTHER TRANCHES

Fund name	ISIN	Distribution policy
C-QUADRAT Active YOU A	AT0000720057	distributing
C-QUADRAT Active YOU VTIA	AT0000A0K241	fully reinvesting